

# CHRYSLER CORPORATION

CHRYSLER DIVISION  
12200 E. JEFFERSON AVE.  
DETROIT 31, MICHIGAN

## SERVICE BULLETIN

Service Mgr.  Shop Foreman  Parts Mgr.  Mechanics

TO ALL CHRYSLER DIRECT DEALERS:

Since it may be possible to apply extremely high loading to the rear axle control strut bracket at the cross-member, it is suggested that reinforcement of these be made on all Imperials in stock and on all Imperials sold and serviced by you up to serial #C56-4847.

Reinforcement plates #1733128 and reinforcement gussets #1733162 are available from the MoPar Parts Depot nearest you.

THE FOLLOWING IS THE PROCEDURE TO BE USED IN MAKING THIS REINFORCEMENT:

Note: All welding should be electric arc using 1/8" electrode AWS class E-6012 or E-6013 at 110-120 amperes.

1. Remove gas tank.
2. Remove both rear shock absorbers.
3. Remove both control strut front eye bolts, loosen the rear bracket attaching bolts and allow the front of control strut to fall free.
4. Place protective covering over rear springs.
5. Inspect all welds between bracket and cross-member and all welds between cross-member and frame side rail for cracks or poor quality. If any cracks or insufficient welds are noted, and/or strut brackets have been pulled out of position, reposition brackets and reweld cracks.
6. Reinforce all welds between bracket and cross-member and between cross-member and frame side rail by placing an additional weld over the existing welds.
7. Position frame reinforcement plates or straps "C" and "D" as shown in diagram allowing clearance for strut eye bolts head and nuts. Securely weld straps "C" and "D" along all points where they contact bracket "B" and where it contacts cross-member "A". Close, by puddle welding, the gap above letters "C" and "D".
8. Tack weld gusset "F" to strut bracket "B" as shown in diagram. The front end of the gusset should be tacked as high as possible to the flat, vertical face of the frame side rail. Securely weld the gusset to both the frame side rail and the strut bracket.
9. All welds should be of good quality. Special attention should be given to welds at points marked "X" in the diagram.



R. B. Teiper  
Director of Service  
CHRYSLER DIVISION

(Over)



No. 949-CH

February 2, 1956

FRAME

REAR AXLE

CONTROL

STRUT BRACKET

AT

FRAME

CROSS-MEMBER

All

1956  
IMPERIALS  
UP TO  
SERIAL  
#C56-4847  
MODELS

10840

PRINTED IN U.S.A.

**"IMPORTANT: This bulletin contains valuable information and was prepared at considerable expense to be of service to you. Failure to use this information may cost you good will and money. We suggest that you insure it is read by all those concerned, and then filed for future reference in your Service Bulletin binder."**



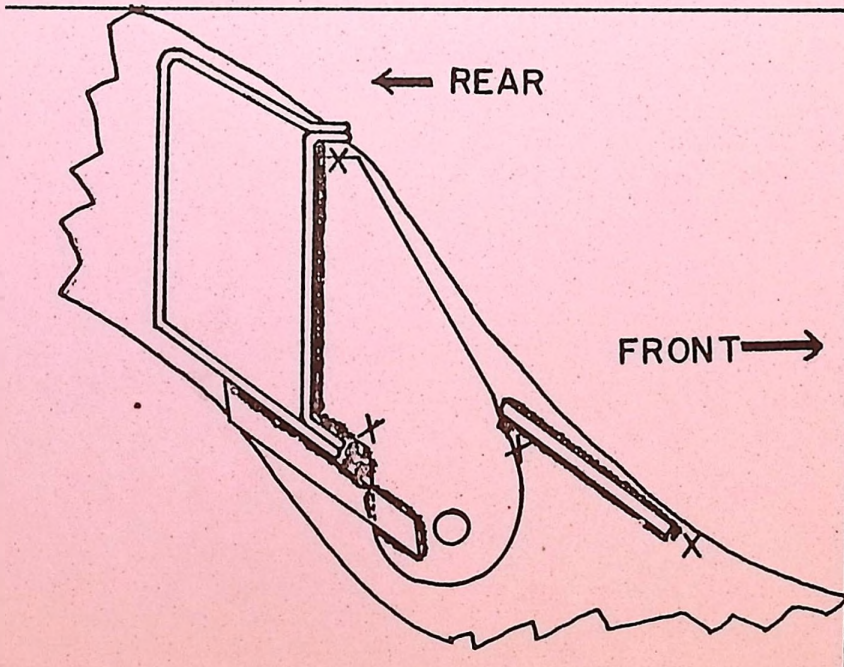
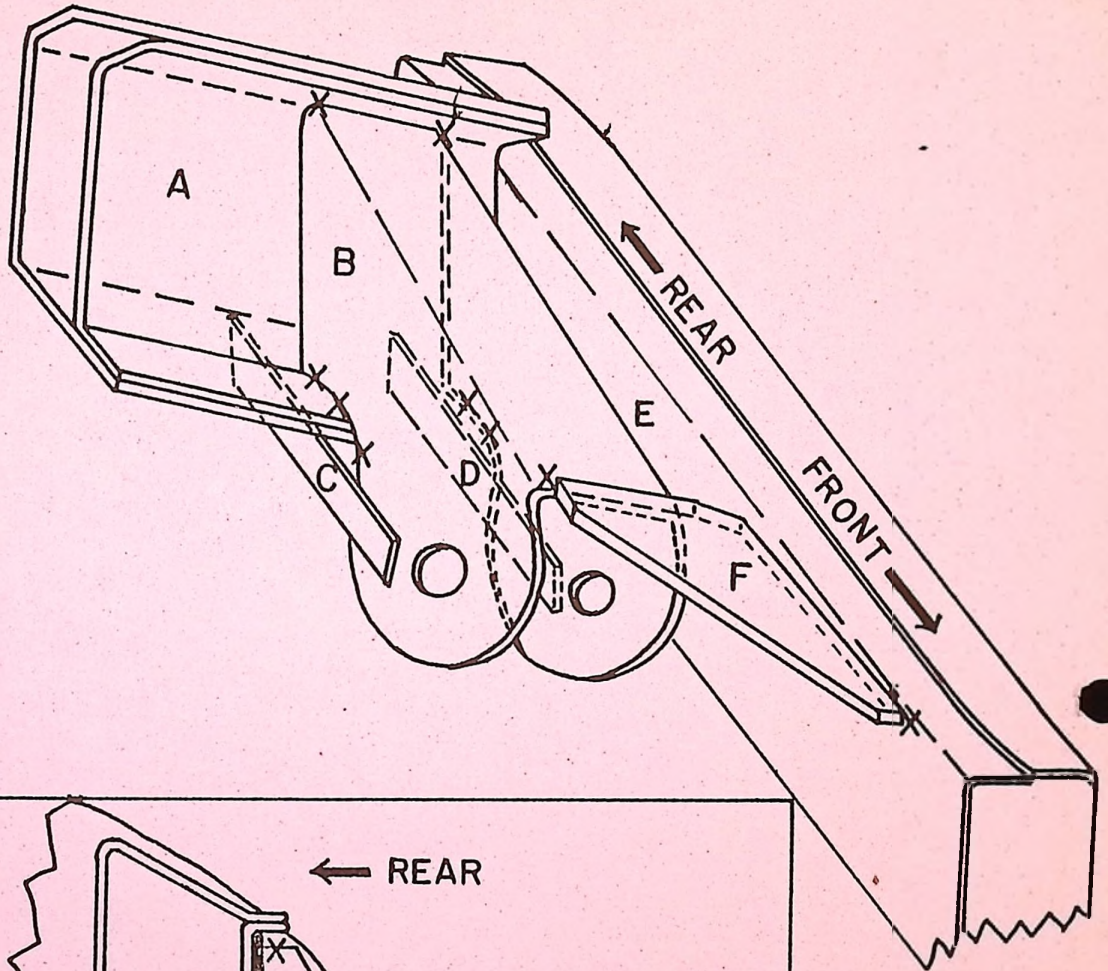
Page 2

No. 949-CH

February 2, 1956

FRAME

REAR AXLE  
CONTROL  
STRUT BRACKET  
AT  
FRAME  
CROSS-MEMBER



ALL  
1956  
IMPERIALS  
UP TO  
SERIAL  
#C56-4847

MODELS

10840